

1N SHIMLA

3N MANALI

2N AMRITSAR

Mystic
HIMACHAL
group tour



SPECIAL OFFER
49,999/-
39,999/-



EXPERIENCE HIGHLIGHTS

- Gain deeper insights into every destination with engaging historical explanations provided by our experienced **Tour Managers**.
- Travel beyond the ordinary—our thoughtfully planned journeys include **interactive games** and activities to make long bus rides enjoyable.
- We offer a variety of hygienic and delicious meal options, including **Vegetarian, Non-Vegetarian, and Jain cuisine**, served in an unlimited buffet system.
- Enjoy exclusive experiences and **delightful surprises** throughout the tour, thoughtfully curated for our travelers.
- We carefully select our hotels, transport providers, and local partners to ensure **high-quality** service and reliable support, even in challenging situations.



INCLUSIONS

- **Return flight tickets from Pune (Economy Class)**
- **All meals included - Breakfast, Lunch & Dinner (Unlimited buffet options)**
- **Comfortable stay in handpicked 3-Star hotels**
- **Private bus & all internal transfers for smooth travel**
- **Thrilling 12 km river rafting experience in Kullu**
- **All entry tickets & permits covered**
- **DJ night & bonfire in Manali**
- **Complimentary 1L water bottle per day**
- **Exclusive goodies from Spiritual Traveller**
- **Professional & friendly tour managers throughout the trip**



EXCLUSIONS

- **5% GST**
- **Meals and water during flight journey.**
- **Lunch on Snow Day and at Golden Temple.**
- **Any additional adventure activities not specified in the itinerary.**
- **Snow clothing and boots.**
- **Charges for any optional or additional adventure activities.**
- **Personal expenses and any services not explicitly mentioned in inclusions.**

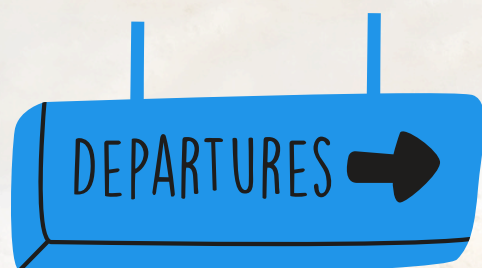


IMPORTANT!



DEPARTURE DETAILS

FLIGHT DETAILS

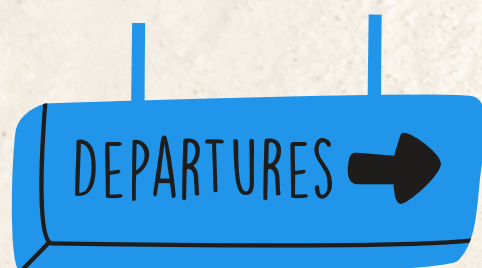


PUNE
(12:30 AM)

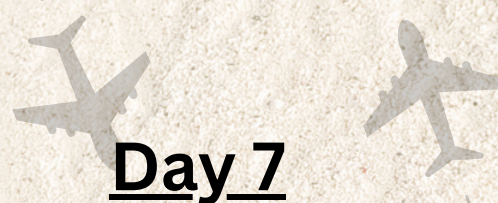
Day 1



DELHI
(02:30 AM)



DELHI/AMRITSAR
(09:30 PM)



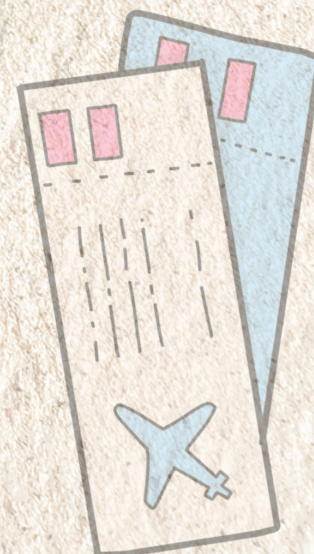
Day 7



PUNE
(11:30 PM)

NOTE:

1. Flight bookings depend on seat inventory at the confirmation time
2. The flight ticket cost is considered ₹12,000 per person however, it may vary at the time of booking. If the price increases, you will be required to pay the difference.
3. Window seats are not included in the package. If you prefer a window seat, you may select it during web check-in at your own expense.



TRAVEL SCHEDULE



DAY 1

TRAVEL SCHEDULE: PUNE TO SHIMLA

1. Airport Assemble

Please report at Pune Airport at least 3 hours prior to your scheduled flight departure.

Boarding passes can be collected directly from the airline check-in counter upon presenting a valid government-issued photo ID.

2. Flight to Delhi

Board your scheduled flight to Delhi.

Once you land, the group will head straight to our private vehicle to begin the journey toward the mountains.

3. Journey to the Hills

Enjoy a scenic drive from Delhi to Shimla.

We will take a planned break along the way for lunch and refreshments at a comfortable roadside stop.

4. Arrival in Shimla

We expect to reach Shimla by the afternoon.

You will have time to walk through the famous Mall Road, perfect for sightseeing and local shopping.

5. Evening Check-in

Head to the hotel for a smooth check-in process.

The rest of the day is yours to unwind and enjoy the cool mountain air.

Meals For a Day (**Breakfast, Lunch & Dinner**)

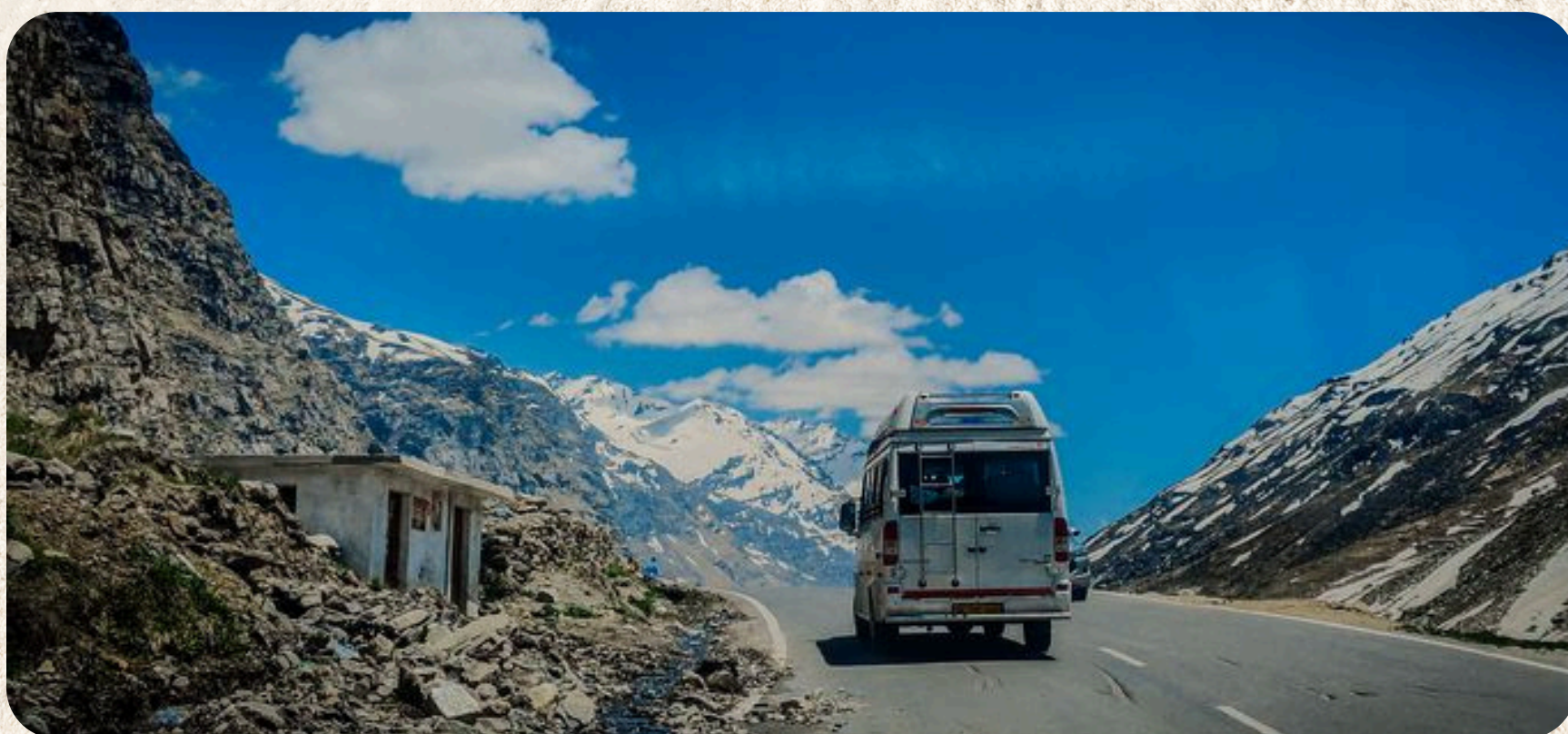


SHIMLA TO MANALI **DAY 2**

TRAVEL SCHEDULE : **SHIMLA - MANALI ENROUTE EXPERIENCE**

1. **Morning:** Breakfast and check-out from Shimla, and depart.
2. **Drive:** Scenic journey through mountains with a stop at Pandoh Dam.
3. **Enroute:** Pass through Kullu Valley and visit a shawl factory.
4. **Lunch:** Stop at a roadside restaurant.
5. **Evening:** Arrive in Manali and check in to your hotel.
6. **Night:** Dinner and overnight stay in Manali

Meals For a Day (**Breakfast, Lunch & Dinner**).



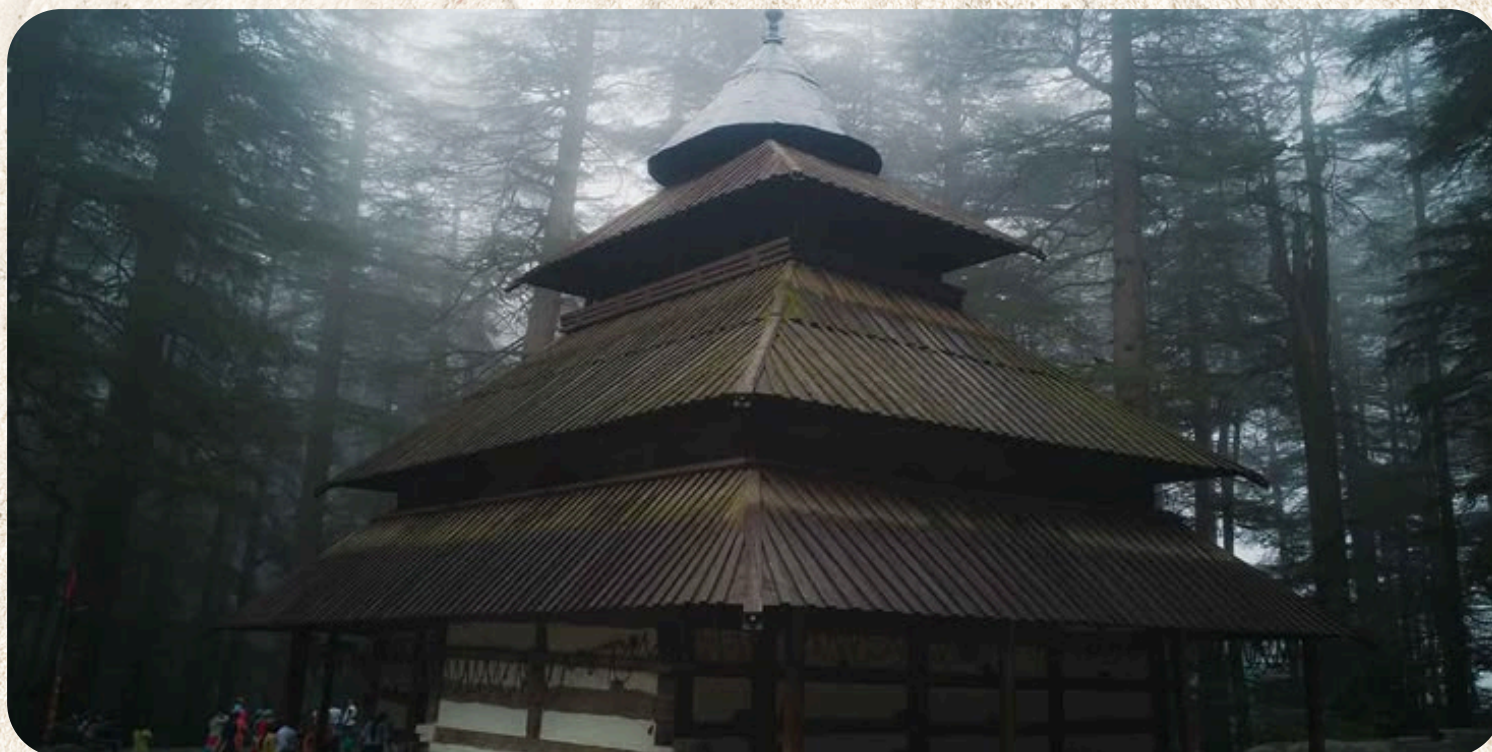
MANALI LOCAL DAY 3



MANALI - LOCAL EXPLORATION

1. Begin your day in Manali with a visit to the serene **Hadimba Temple**, a beautiful **pagoda-style shrine** featured in the movie Yeh Jawaani Hai Deewani —perfect for photography.
2. Next, head to **Mall Road**, the town's bustling hub for shopping and street food. **Explore** local handicrafts, Tibetan items, and enjoy snacks like momos and chowmein
3. While there, visit the peaceful **Tibetan Buddhist Monastery** to experience its calming atmosphere and admire the statue of Lord Buddha.
4. Return to your hotel by evening and wrap up the day with a **fun dance party**.

Meals For a Day (**Breakfast, Lunch & Dinner**)



SNOW POINTS

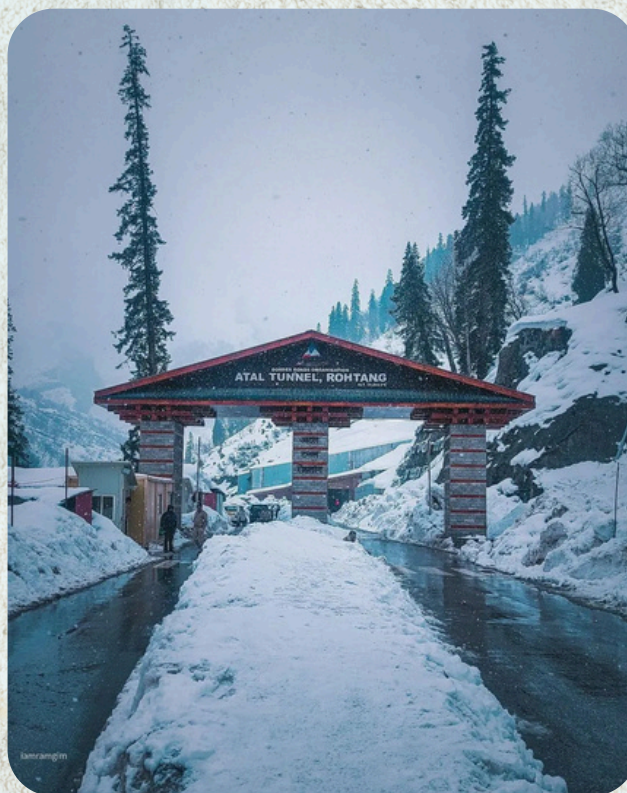
DAY 4



SNOW POINT EXCURSION & HOT SPRINGS VISIT.

1. **After a delightful breakfast at the hotel, get ready for an exciting day in the snow. Proceed towards the designated Snow Point, which may include Solang Valley, Atal Tunnel, Sissu, Nehru Kund, or Palchan, depending on permissions from the Indian Army. (For Snow Point visits, early departures may be required. We will try to arrange a packed breakfast; however, it may be skipped depending on hotel policy and departure timing.)**
2. **Spend approximately 2 hours enjoying the snowy landscapes. You can also indulge in various snow activities at your own expense, making the most of this winter experience.**
3. **On your way back, visit Vashisht Kund, renowned for its natural hot water springs—perfect for a relaxing and rejuvenating stop.**
4. **In the evening, attend a fun-filled game party.**

Meals For a Day (Breakfast & Dinner)





KULLU ADVENTURE & TRANSFER TO **AMRITSAR DAY 5**

Adventurous Day



1. After breakfast, check out from the hotel and begin your day with a visit to **authentic dry fruit outlets**, where you can shop for premium saffron, shilajit, and other Himalayan herbs.
2. Continue the adventure with an **exhilarating river rafting experience** in the icy waters of the Beas River, perfect for thrill-seekers.
3. Later, embark on your journey towards **Amritsar**. Enjoy the scenic drive through picturesque landscapes with a lunch stop en route.
4. Upon arrival in the evening, check in to your hotel and unwind. Relish a delicious dinner followed by a **comfortable overnight stay in Amritsar**.

Meals For a Day (Breakfast, Lunch & Dinner)



AMRITSAR DAY 6



ATTARI-WAGAH BORDER VISIT AND MANY MORE.

1. Start your day by visiting **Jallianwala Bagh**, a historic place remembering the 1919 massacre.
2. visit the **Golden Temple**, enjoy its peaceful atmosphere, and spend some time shopping nearby.
3. In the afternoon, head to the **Attari-Wagah** Border to watch the famous flag-lowering ceremony and cheer for the Indian soldiers.
4. Return to the hotel in the evening, have dinner, and relax with an **overnight stay in Amritsar**.

Meals For a Day (Breakfast & Dinner)



AMRITSAR TO DELHI DEPARTURE

DAY 1



1. After breakfast, check out from the hotel and begin your journey from [Amritsar to Delhi](#).
2. Upon arrival, proceed to the airport for your onward flight to [Pune](#), reaching by late evening.
3. The tour concludes with wonderful memories and joyful experiences. Bid farewell to your fellow travelers and stay connected for future journeys with [Spiritual Traveller](#).

NOTE : Guests traveling by train will be dropped at Amritsar Railway Station as per their scheduled departure.





PRICING DETAILS



Triple Sharing (With Flight)
(3 Adults in one room)
~~₹ 49,999~~ → ₹ **39,999/-** per person only.



Double Sharing (With Flight)
(2 Adults in one room)
~~₹ 51,999~~ → ₹ **41,999/-** per person only.



Child (5-12 Years)
~~₹ 47,499~~ → ₹ **34,499/-** per child only.

IMPORTANT NOTES:

- Book your tour at the **earliest** to avail the **best flight fares**.
- For **land-only package**, deduct **₹12,000 per person** from the selected package cost.
- In case any **sightseeing is closed**, an alternative will be arranged by the **tour manager**.
- For triple/quad occupancy, the hotel provides **1 queen bed + 1 extra mattress** (separate bed not guaranteed).
- Mentioned hotels are **subject to availability**; similar category hotels will be provided if unavailable.
- Snowfall & Snow **cannot be guaranteed**, as it completely depends on natural weather conditions.



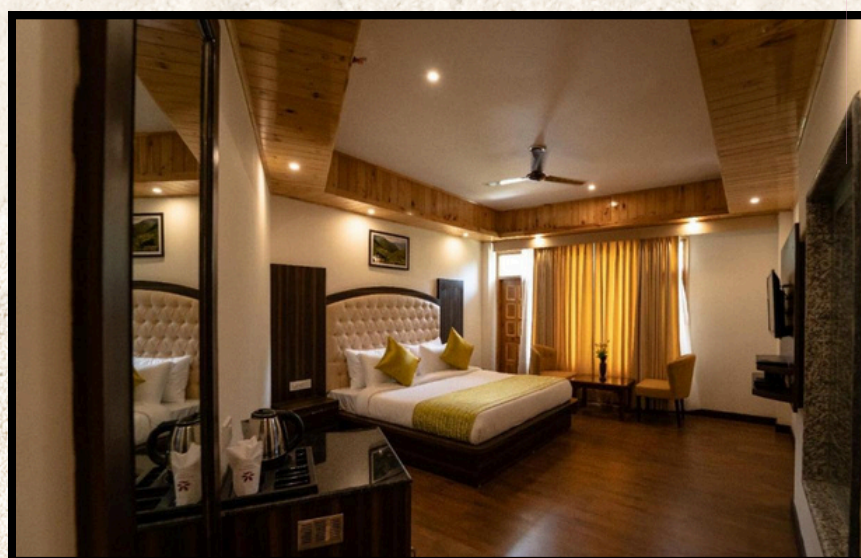
COMFORTABLE & PREMIUM STAYS **INCLUDED**

Relax in handpicked hotels for a memorable stay experience

SHIMLA - **Andaz Resort/ Similar**

MANALI - **Chamunda Heavens/ Similar**

AMRITSAR - **Virasat Haveli/ Similar**



BOOKING & CANCELLATION POLICY



BOOKING AMOUNT:

₹5,000 per person **(Non-refundable)**.

₹12,000 per person Flight Cost: Approx. **(Refundable as per the respective airline's cancellation and refund policy)** Note: Flight fares are dynamic and subject to change until ticket issuance. Any refund on flight tickets will be processed strictly as per the airline's applicable refund policy

CANCELLATION POLICY:

1. 30 days or more before departure - 50% refund of total tour cost.
2. Within 30 days of departure - No refund.

TRAIN / FLIGHT CANCELLATION:

As per IRCTC / airline rules + applicable service charges

BANK DETAILS

ACCOUNT NAME: SPIRITUAL TRAVELLER

ACCOUNT NUMBER: 51970200000792

IFSC CODE: BARBOCHAPHE

MICR CODE: 411012056

BANK ADDRESS:

**CTS 4270, PLOT NO. 7,
PIMPRI CHINCHWAD LINK ROAD,
CHINCHWAD GAON, PUNE,
MAHARASHTRA - 411033**

UPI ID: SPIRITUALTRAVELLER21-2@OKAXIS





ABOUT US (SPIRITUAL TRAVELLER)



Based in **Pimpri Chinchwad**, we are a trusted tour provider offering curated travel experiences across **INDIA and INTERNATIONAL destinations**.

Established in September **2021** on the auspicious occasion of Ganesh Chaturthi, our vision is to provide affordable, comfortable, and hassle-free journeys for every traveler.



We believe travel is more than just visiting places—it is freedom, discovery, and a path to meaningful experiences. Inspired by ancient Indian philosophy, we aim to create **journeys that leave lasting memories**.

WHY CHOOSE US

- Professionally planned and organized tours.
- Affordable pricing with best value.
- Comfortable stays & smooth transportation.
- Expert tour assistance throughout the trip.
- Customized packages as per your needs.
- Trusted service with growing happy clients



CONTACT US AT



www.spiritualtraveller.in



@spiritual_traveller21



@spiritual_traveller21



+918482852410

TOUR YOURS, RESPONSIBILITY OURS.